

DARGLOBAL

URBANOASIS



**MISSONI**

PENTHOUSE WATERFRONT LIVING  
IN DUBAI







**THE MOOD.  
THE VIBES.  
THE LIFESTYLE.**

**The Best of  
Miami is now  
at the heart  
of Dubai.**

Immerse yourself in the best of Miami, with bespoke spaces designed by Missoni Home to ensure you live in your very own Urban Oasis.



## MISSONI

“Who says a  
Rainbow has  
7 colors?  
It has many  
shades.”

Missoni inaugurated and affirmed an unmistakable way of dressing and living: with a colorful “put-together” of zigzag motifs, stripes, waves and slub yarns in a patchwork of geometric and floral jacquard.

*The ultimate urban wear  
since the 1970s.*



## **MISSONI**

**“To furnish my own way is to create an organized but informal habitat that excites and intrigues, where every space is an oasis of colors and moods.”**

— ROSITA MISSONI



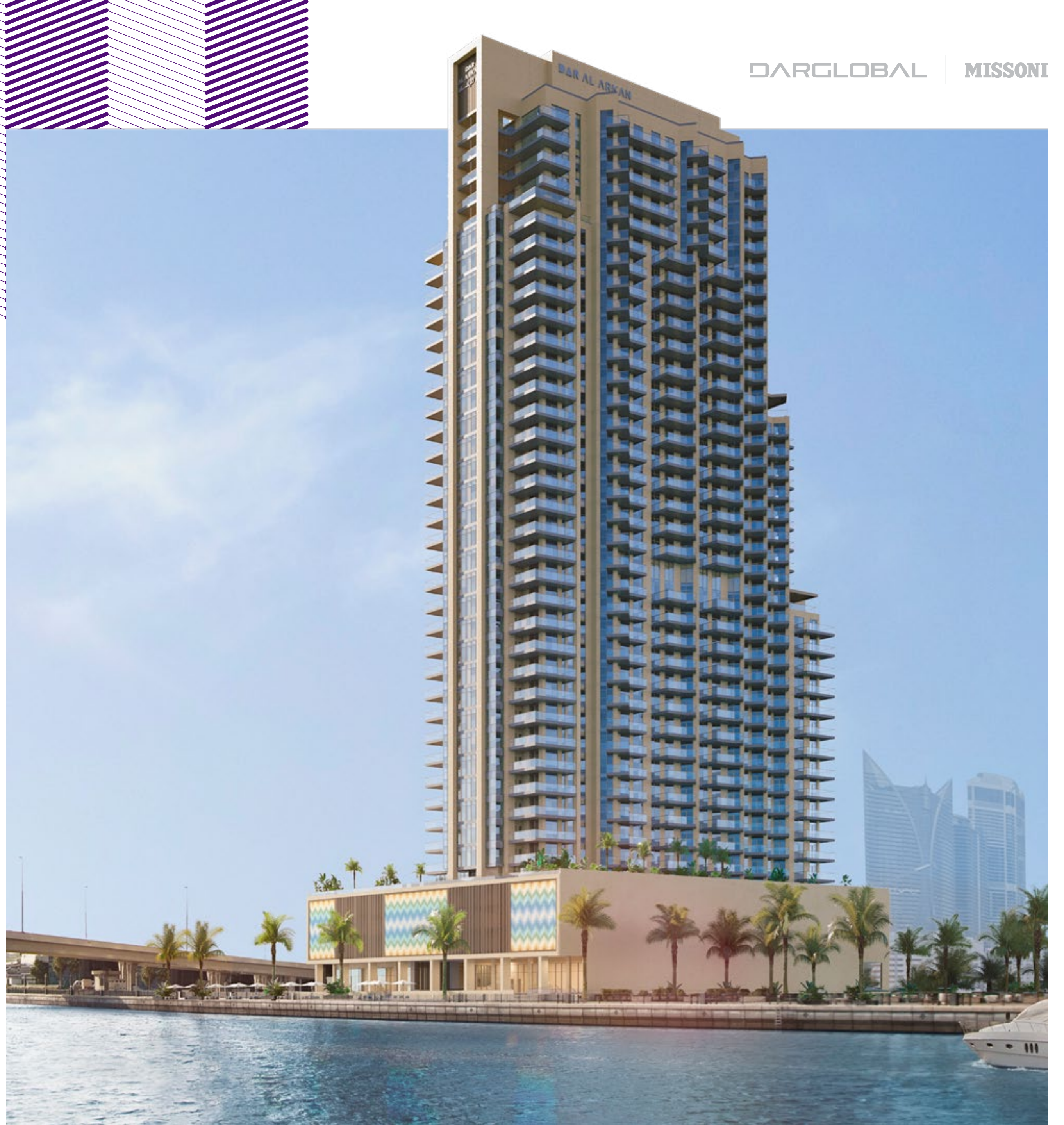
## MISSONI

The home, Rosita's great passion, is her idea of a never-ending evolution. A lifestyle of home furnishings dominated by unmistakable and decorative fabrics, furnishing forms in interior spaces are versatile and modular and can also easily migrate outdoors. The personality of the style is consistent, yet renewed with unexpected additions of accessories and different details.

After designing the iconic Missoni Baia in Miami, Florida, now for the second time ever, Missoni Home exports its distinct living concept to Dubai. An iconic residential tower in Dubai decorated with a range of exquisite home-accessories and colorful settings. Presenting Missoni's take on elite 'Miami lifestyle' homes on par with luxury and fashion.

# WELCOME TO THE URBAN OASIS

A distinct residential  
tower by the Dubai Canal  
with interiors by Missoni  
encompassing the best  
of Miami.





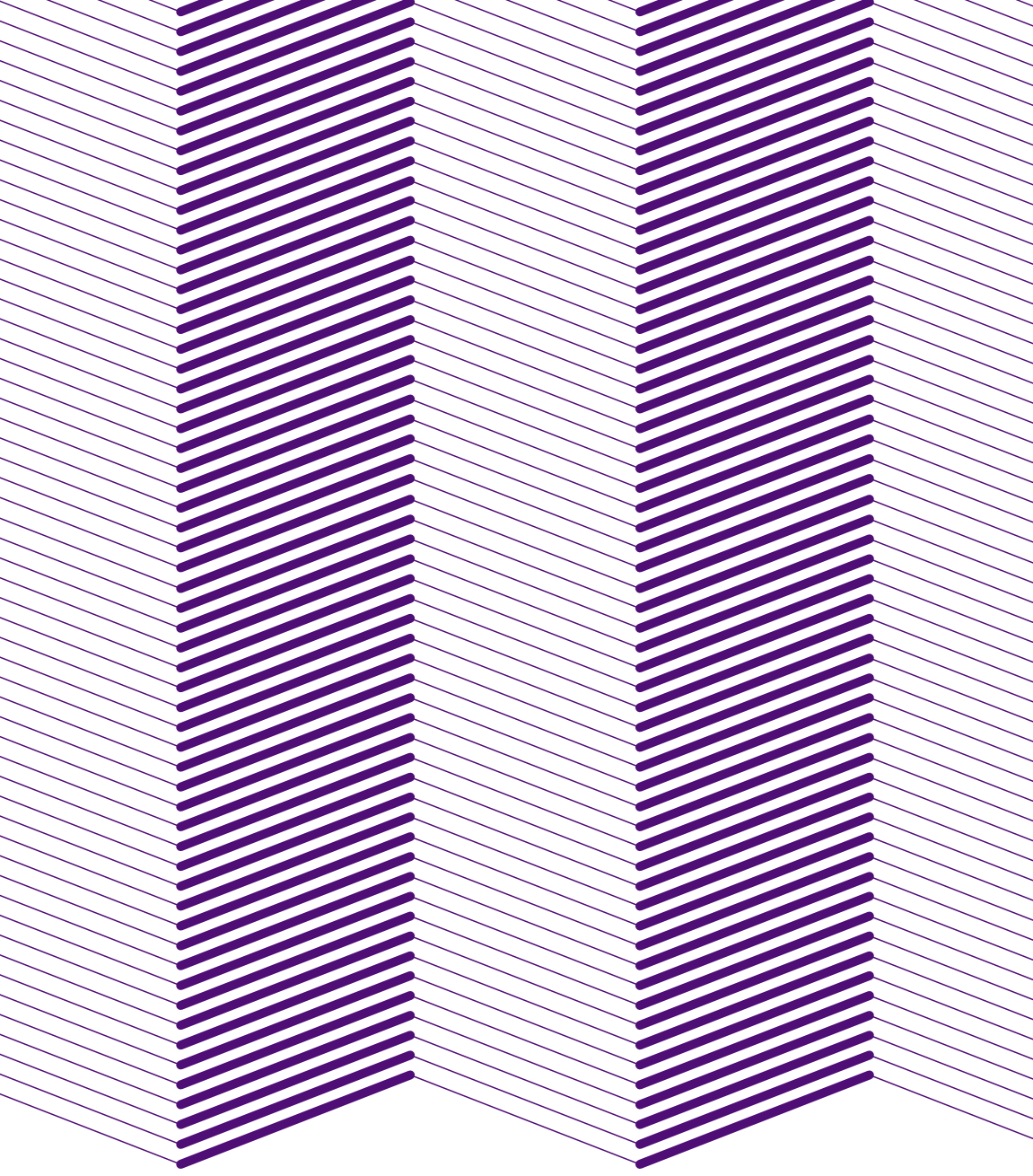
## THE LOCATION

# An oasis in the heart of the city

Urban Oasis is situated at the heart of Dubai, directly on Dubai Canal, and a stone throw away from Dubai's most premium lifestyle locations.

Like it's sister tower in Miami, Urban Oasis is thoughtfully crafted to ensure all its residents, have luxury homes with sweeping views of the city and the canal.

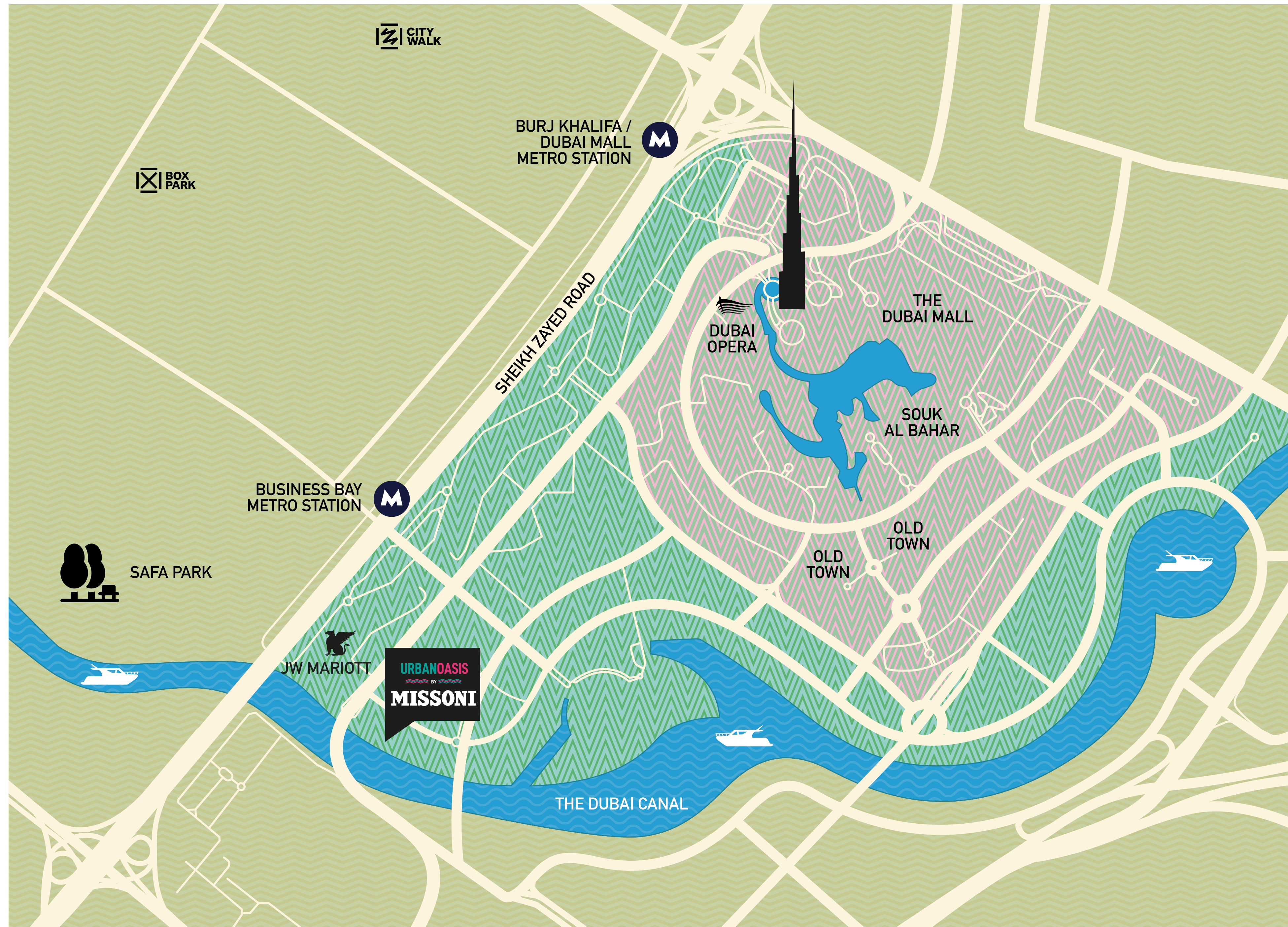




**FROM**  
 **URBAN OASIS**

**TO**  **BY CAR**

Dubai Canal	0 min
Downtown Dubai	5 min
The Dubai Mall	5 min
Jumeirah Beach	7 min
Dubai Marina	17 min
Dubai Int'l Airport	17 min
Expo 2020	30 min







# WATERFRONT LIVING

*Directly  
by the Dubai  
Canal*

The Urban Oasis Tower reaches 38 stories, presenting unparalleled views of Dubai's most dynamic areas and canal.



## WATERFRONT PENTHOUSES BY MISSONI

Living at the waterfront is not just a luxury, it is therapy for both body and mind, and this is exactly what The Penthouses in Urban Oasis offer to its residents. These unparalleled and exclusive units capture Missoni home's love for mood

and color and the vibes of its sister tower in Miami through varied elements of fashion and art. In addition to the Penthouses, there are an array of apartment choices from studios, one, two, three and four bedroom apartments.



# THE PENTHOUSES

**A private  
elevator  
to your  
Miami-style  
penthouse**

These exclusive penthouses come with a private elevator that opens directly into a living room radiating artistic brilliance and style, complementing the mesmerizing views of Dubai Canal. This is a space designed for those who prefer to live life in an oasis sprinkled with the vibes of Miami.



## THE PENTHOUSES

# Make every gathering a celebration

Cover your elegant living spaces in thrills and enjoyment. The Urban Oasis' rich textures and prominent patterns is the ideal setup to welcome you and your loved ones to moments worth celebrating.





## THE PENTHOUSES

### Make every meal a feast

Every detail in a Missoni Home, is a detail well crafted. From Miami to Dubai, Missoni prides itself in creating unmistakable decorative fabrics, patterns and color palettes that fit every room in the home perfectly. All for the sole purpose to turn every moment, or every meal together, into an occasion worth remembering.







## THE PENTHOUSES

### **A closed kitchen for a sleeker look**

Every penthouse has a closed kitchen designed to enhance both efficiency and privacy. The perfect space to create sumptuous meals for your family and guests.



## THE PENTHOUSES

**Start  
every day  
rejuvenated**

Relax in the comforts of color schemes that help cast away the stresses of the day. The designs in the bedrooms echo an atmosphere that both inspire and soothe the mind. These exclusive bedroom designs are created solely for the Urban Oasis.





KELLY HOPPEN DESIGN MASTERCLASS



## THE PENTHOUSES

### For a seamless morning routine

Every morning should be a good morning. And every good morning begins with the right routine. At the Urban Oasis Tower enjoy en-suite luxury bathrooms from the bedrooms, so that you can start every day perfectly.





# THE AMENITIES

## A grand entrance with a Miami flair

Colors, luxury, and flawless superior styles characterize the ambiance of the grand lobby. It captures the flair of both cities through an eclectic blend of the iconic zigzag patterns, geometric shapes and patchwork designs.



MISSONI

MISSONI



## AMENITIES — THE INFINITY POOL

### The moods of Miami Beach at your doorstep

Enjoy an exceptional retreat in the heart of the city, the infinity swimming pool at the podium is the perfect getaway for a midday vacation. Similar to the Miami beaches, this grand pool, surrounded by verdant greens and aquatic fountains, is the ideal escape in the midst of a busy lifestyle.







## AMENITIES — THE GYM

# Get the Miami Muscle Beach vibes with a view

Enjoy a workout while overlooking the best views of the canals and the pristine city silhouette. The gym has the latest cutting-edge equipment, the latest Missoni interiors and more importantly, the best-in-class work outs fit for Dubai elites.





**URBANOASIS**  
BY  
**MISSONI**

**PENTHOUSES FLOOR PLANS**

# LEVEL 2

3 BEDROOM

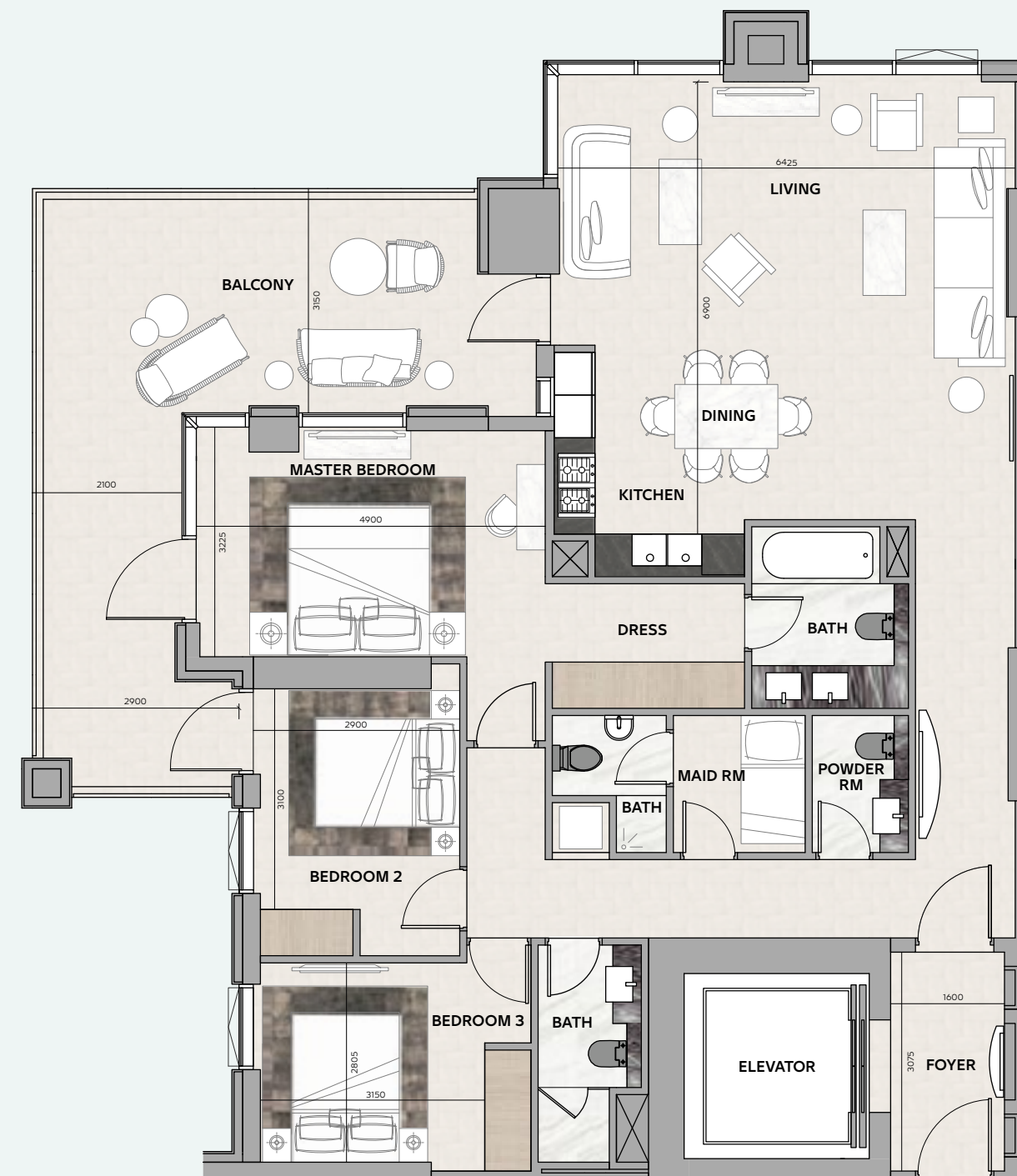
TOTAL AREA

178 sq.m / 1916 sq.ft

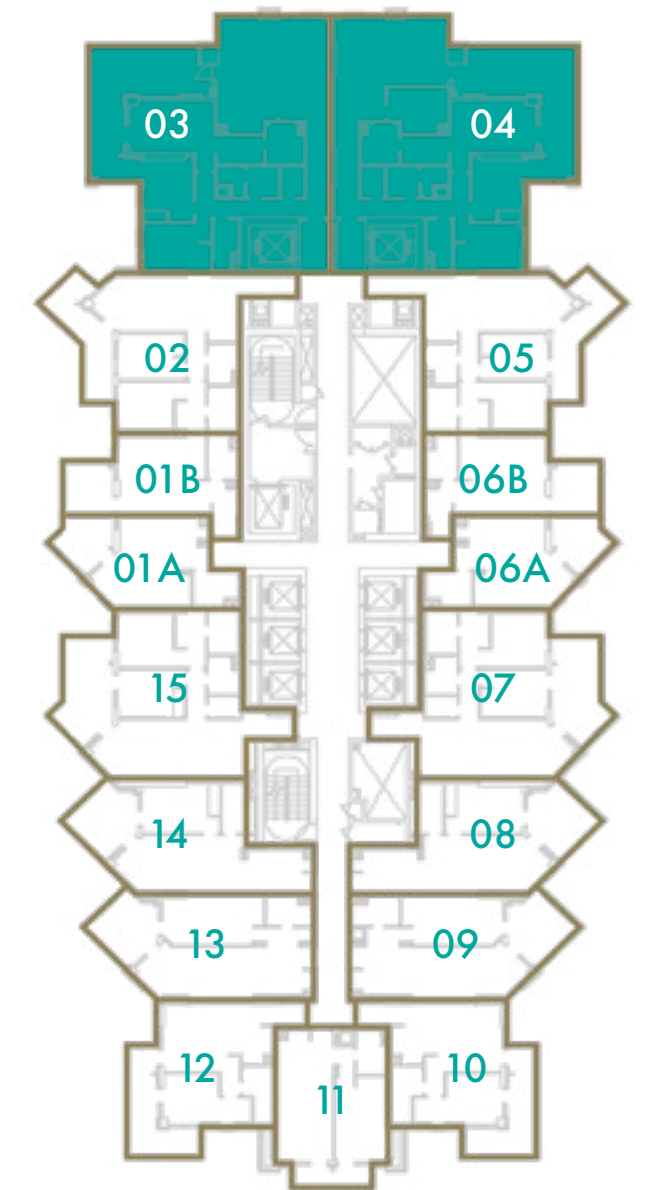
UNIT N°

03 & 04

URBAN OASIS BY **MISSONI**



DUBAI CANAL



Disclaimer: All pictures, plans, layouts, information, data and details included in this brochure are indicative only and may change at any time up to the final 'as built' status in accordance with final designs of the project, regulatory approvals and planning permissions. All accessories and interior finishes such as wallpaper, chandeliers, furniture, electronics, white goods, curtains, hard and soft landscaping, pavements, features, gym, swimming pool(s) and other elements displayed in the brochure, or within the show apartment or between the plot boundary and the unit, are not part of the unit and are shown for illustrative purposes only.



# LEVELS 3 - 14

**3 BEDROOM**

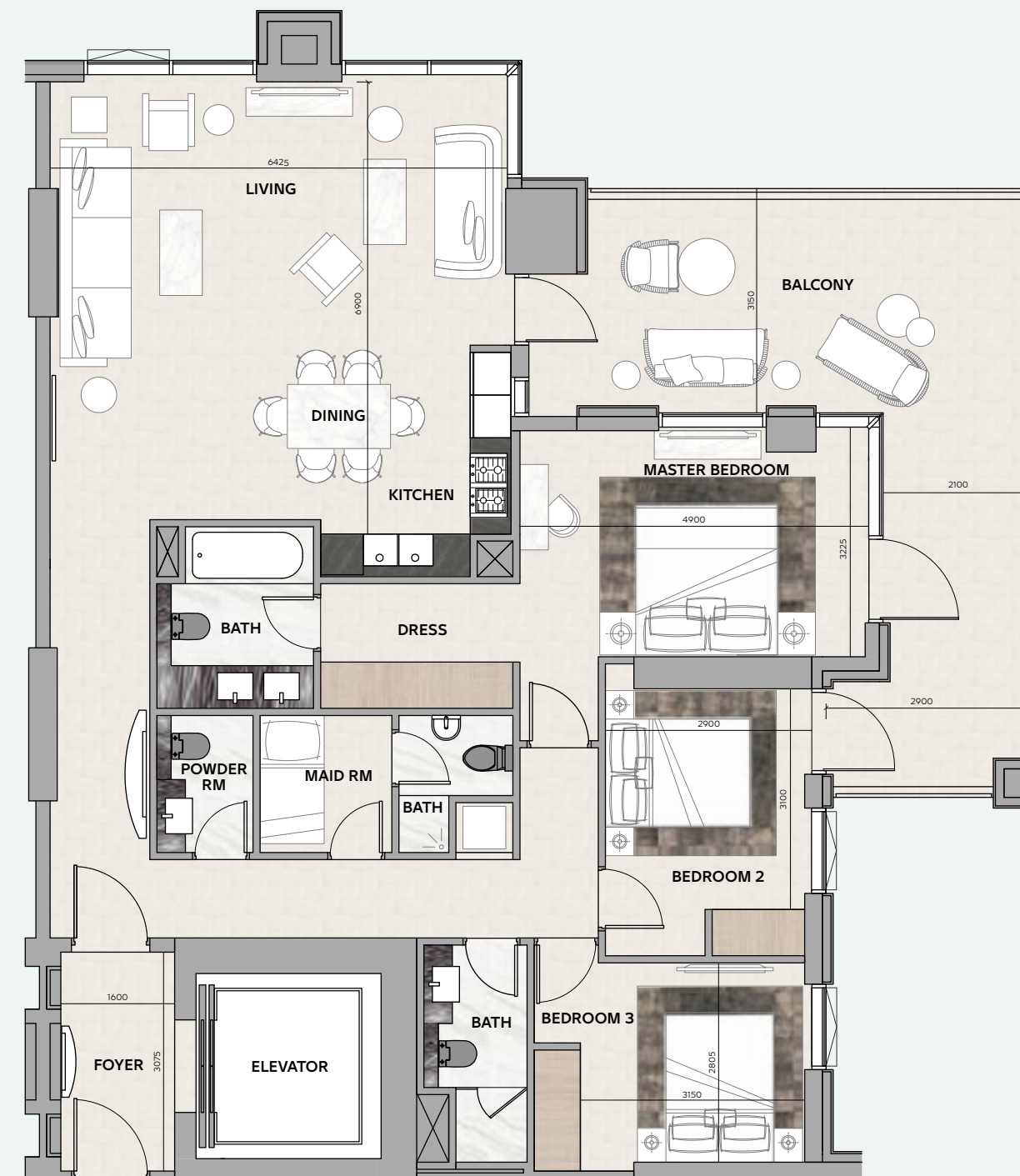
**TOTAL AREA**

178 sq.m / 1916 sq.ft

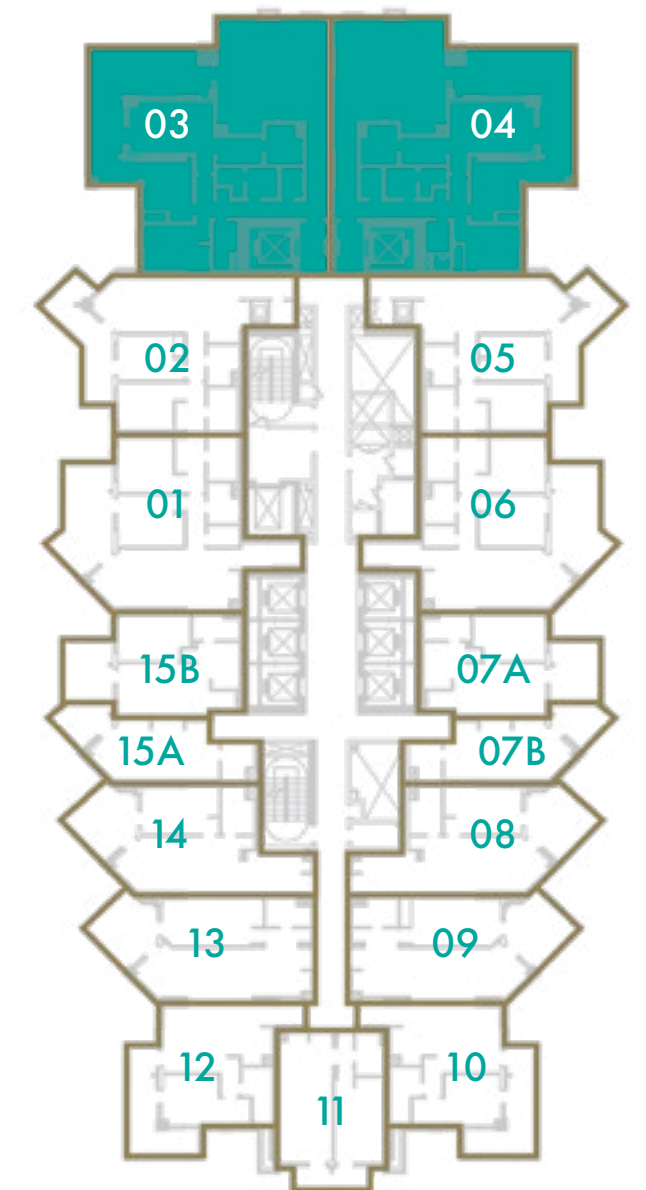
**UNIT N°**

03 & 04

**URBAN OASIS** BY **MISSONI**



DUBAI CANAL



Disclaimer: All pictures, plans, layouts, information, data and details included in this brochure are indicative only and may change at any time up to the final 'as built' status in accordance with final designs of the project, regulatory approvals and planning permissions. All accessories and interior finishes such as wallpaper, chandeliers, furniture, electronics, white goods, curtains, hard and soft landscaping, pavements, features, gym, swimming pool(s) and other elements displayed in the brochure, or within the show apartment or between the plot boundary and the unit, are not part of the unit and are shown for illustrative purposes only.



# LEVEL 15

**3 BEDROOM**

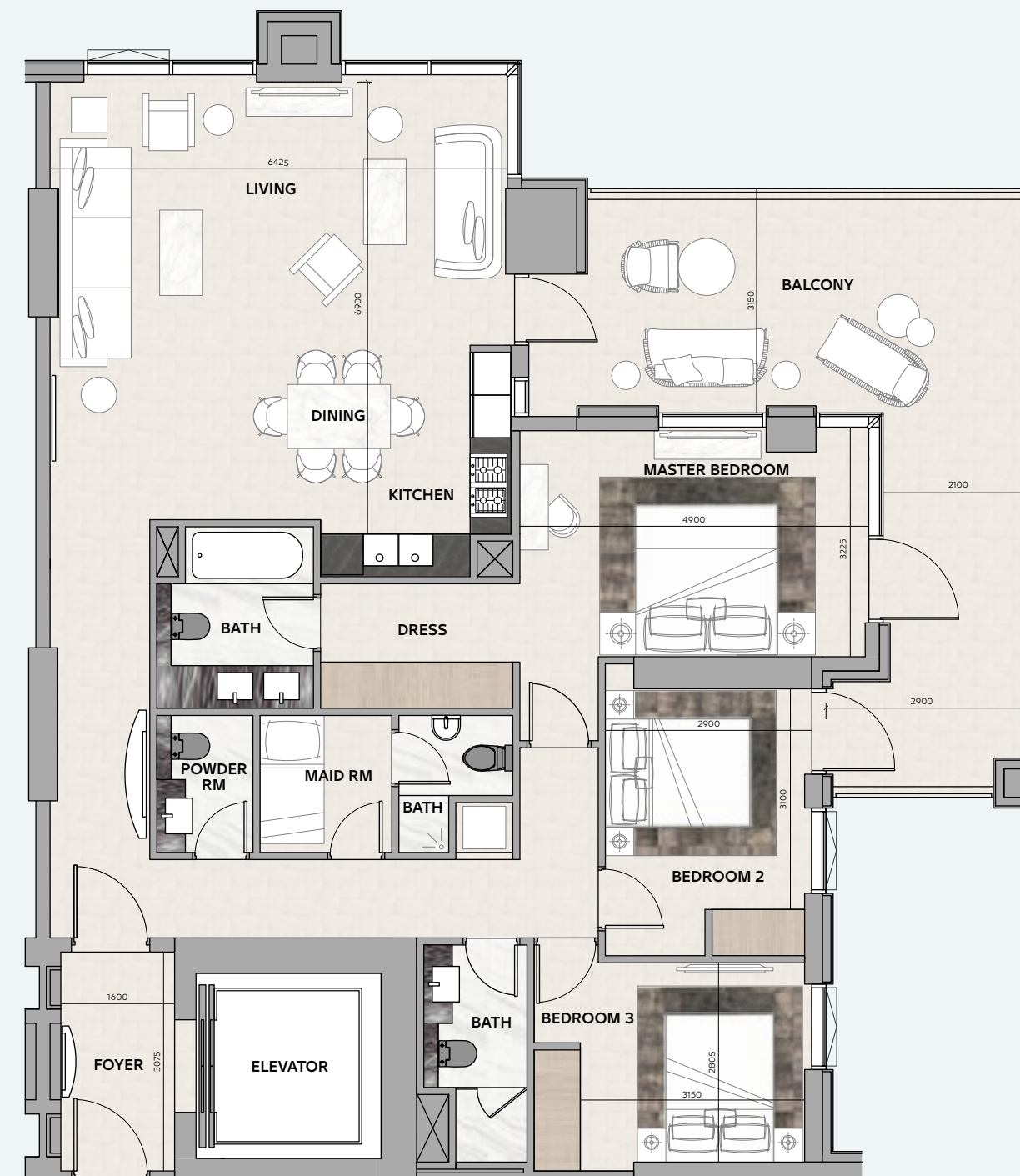
**TOTAL AREA**

178 sq.m / 1916 sq.ft

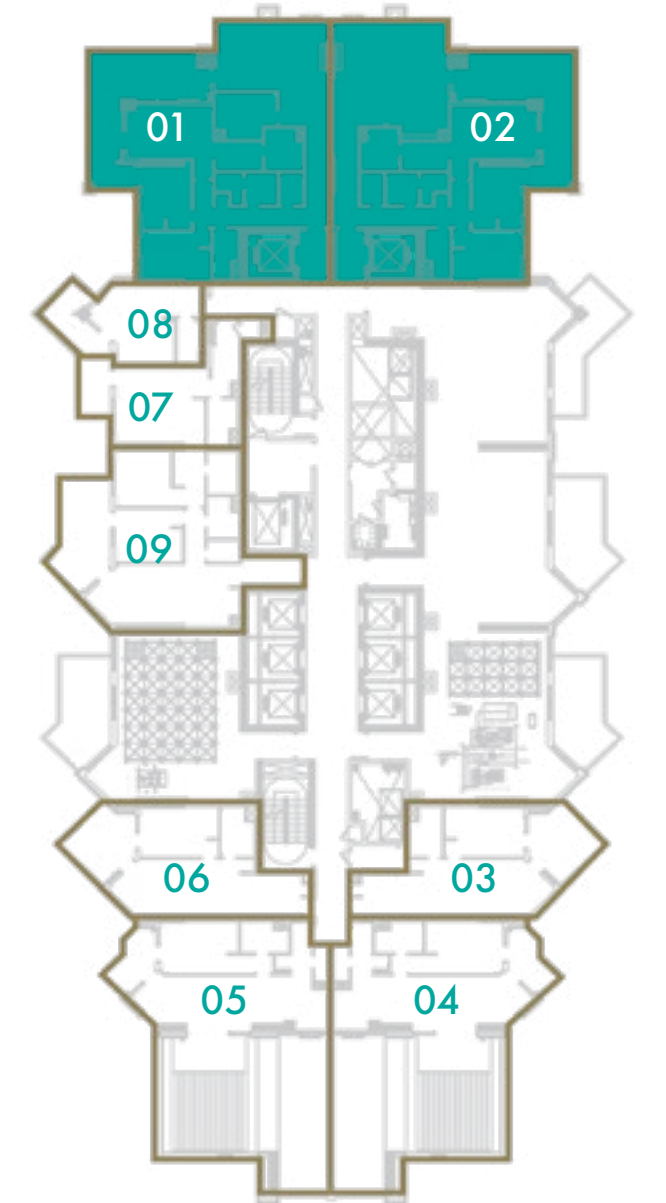
**UNIT N°**

01 & 02

**URBAN OASIS** BY **MISSONI**



DUBAI CANAL



Disclaimer: All pictures, plans, layouts, information, data and details included in this brochure are indicative only and may change at any time up to the final 'as built' status in accordance with final designs of the project, regulatory approvals and planning permissions. All accessories and interior finishes such as wallpaper, chandeliers, furniture, electronics, white goods, curtains, hard and soft landscaping, pavements, features, gym, swimming pool(s) and other elements displayed in the brochure, or within the show apartment or between the plot boundary and the unit, are not part of the unit and are shown for illustrative purposes only.



# LEVELS 16 - 23

**3 BEDROOM**

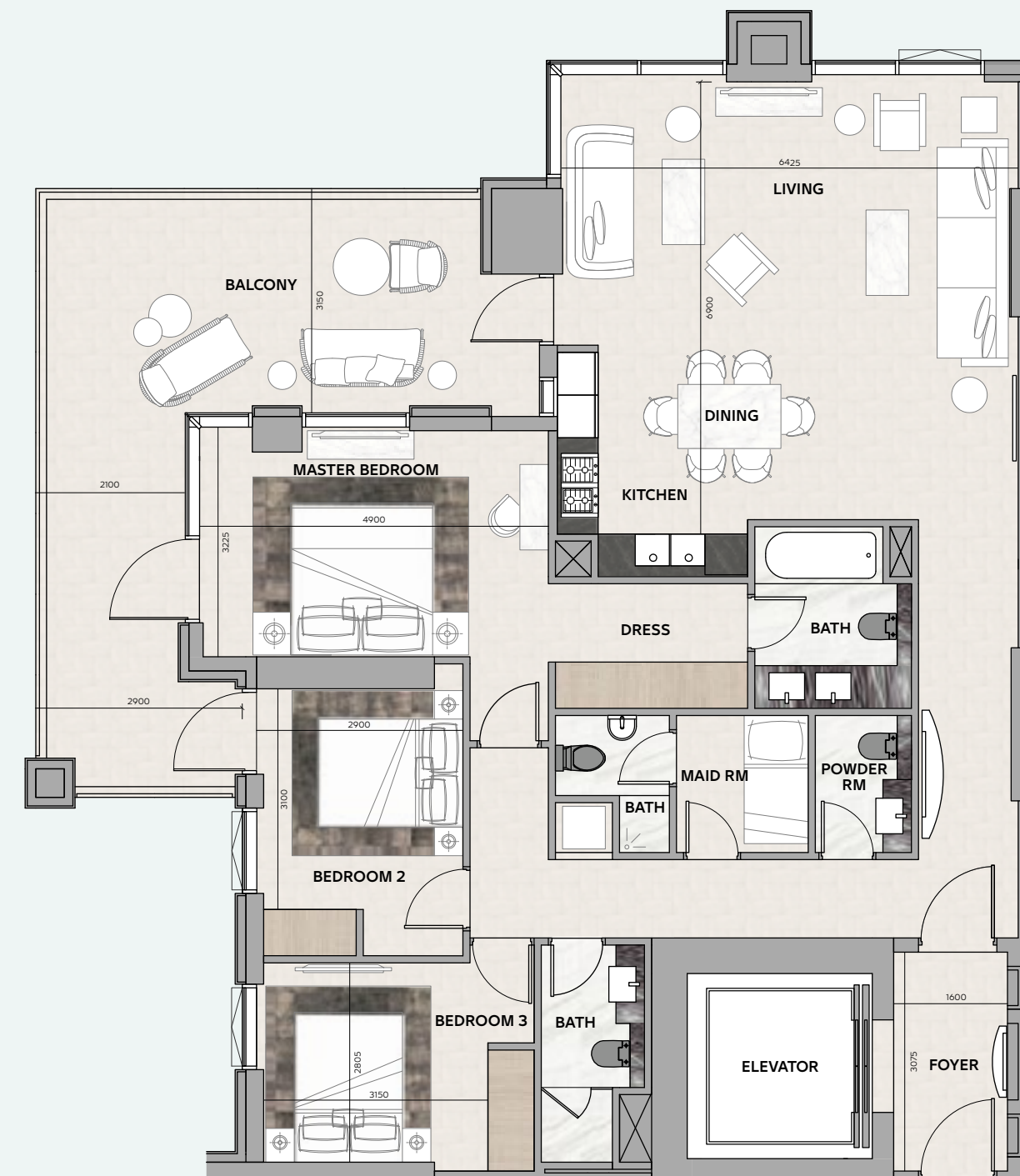
**TOTAL AREA**

178 sq.m / 1916 sq.ft

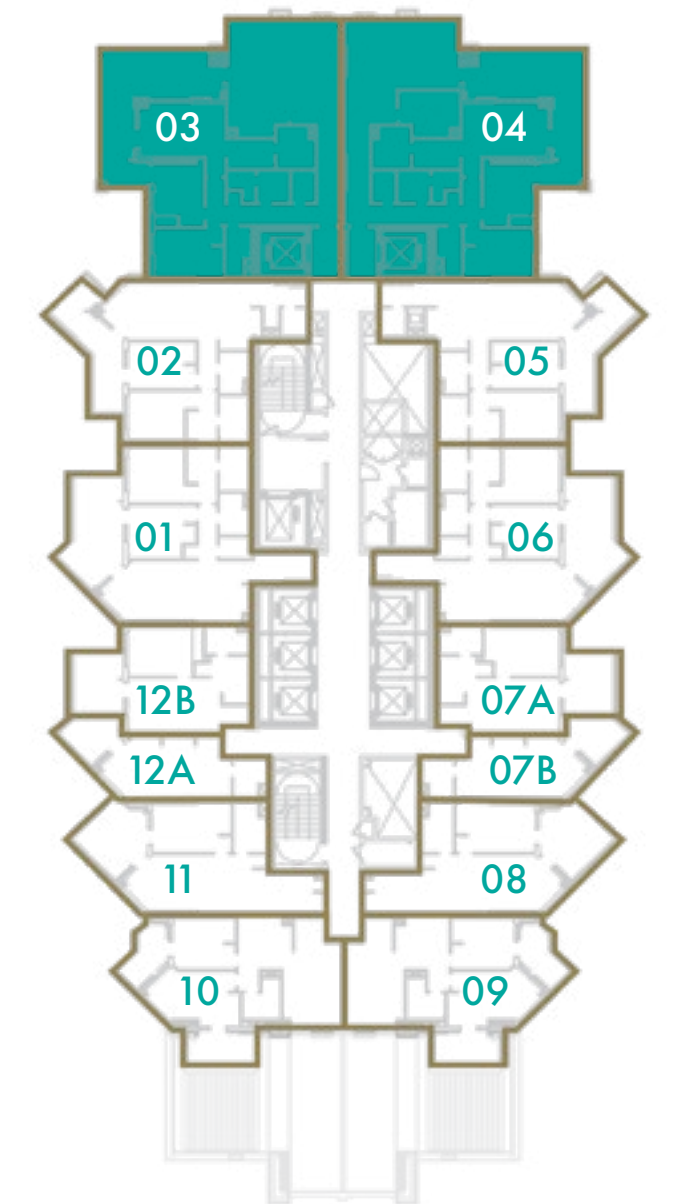
**UNIT N°**

03 & 04

**URBAN OASIS** BY **MISSONI**



DUBAI CANAL



Disclaimer: All pictures, plans, layouts, information, data and details included in this brochure are indicative only and may change at any time up to the final 'as built' status in accordance with final designs of the project, regulatory approvals and planning permissions. All accessories and interior finishes such as wallpaper, chandeliers, furniture, electronics, white goods, curtains, hard and soft landscaping, pavements, features, gym, swimming pool(s) and other elements displayed in the brochure, or within the show apartment or between the plot boundary and the unit, are not part of the unit and are shown for illustrative purposes only.





# LEVEL 24

**3 BEDROOM**

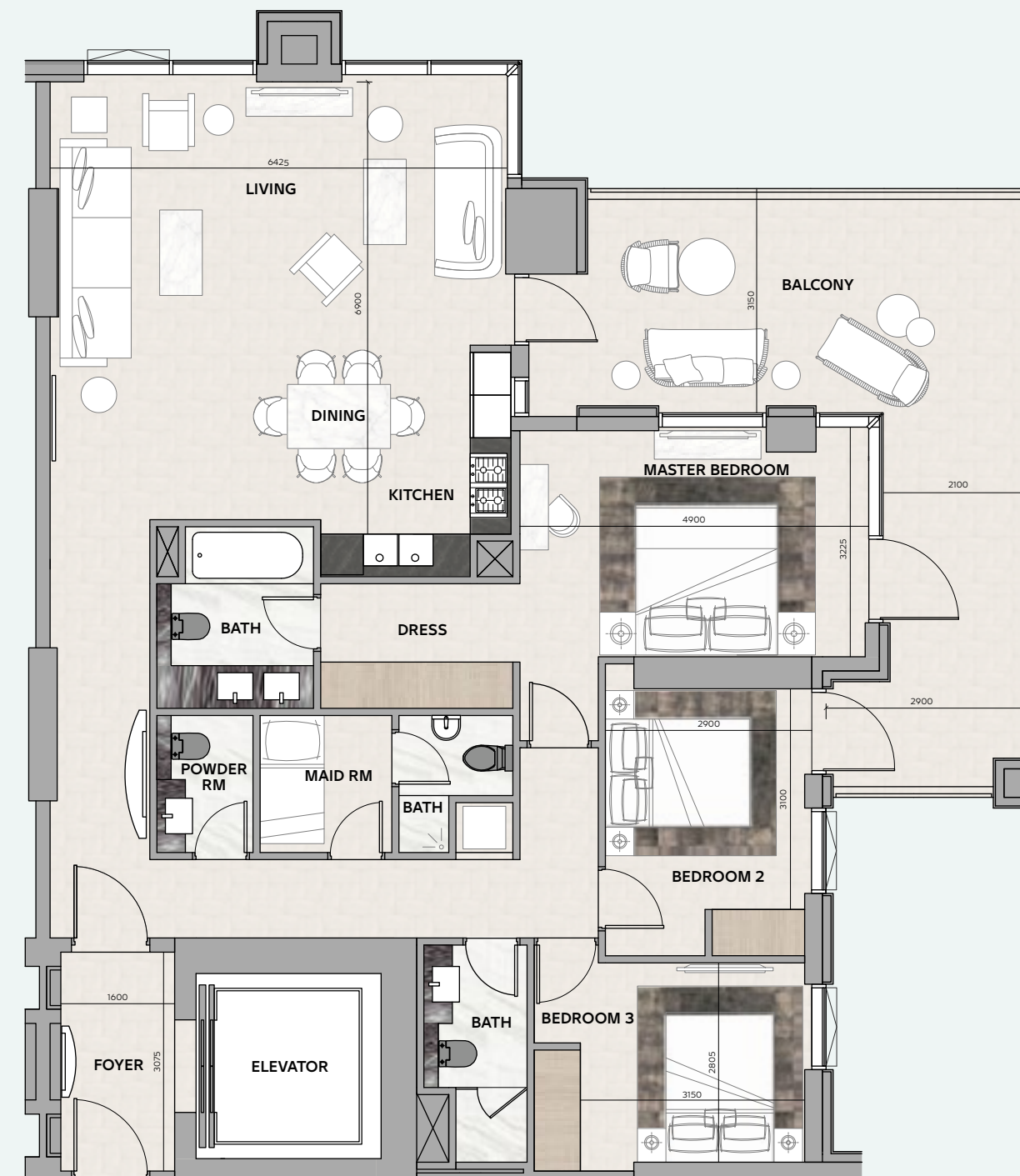
**TOTAL AREA**

178 sq.m / 1916 sq.ft

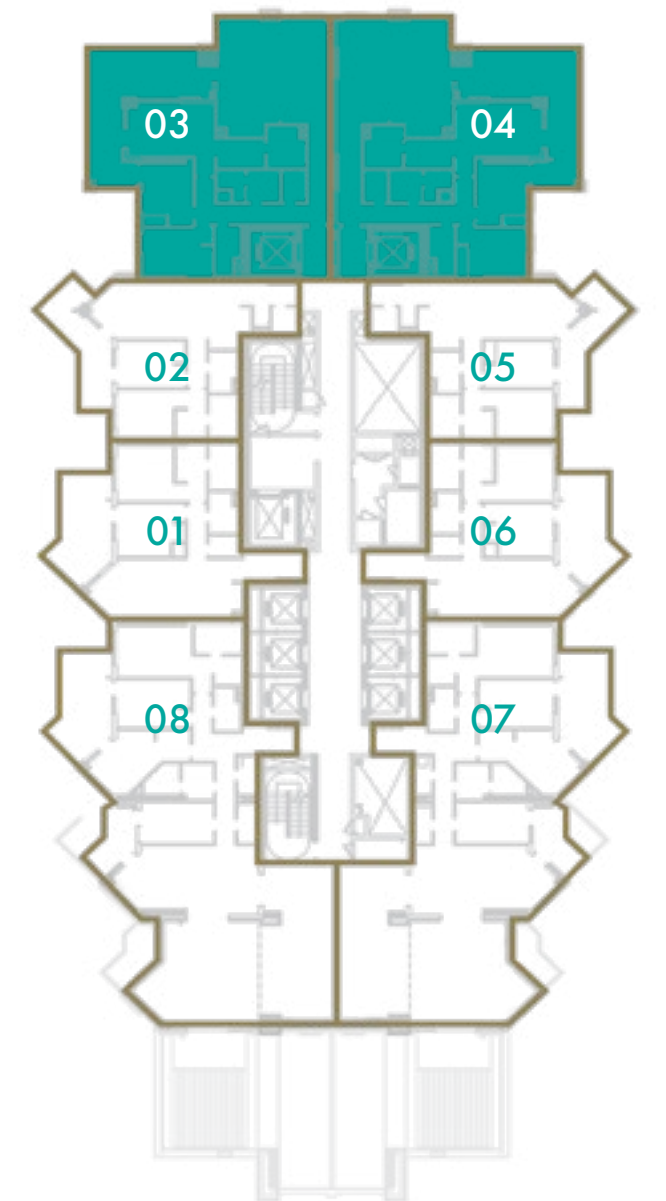
**UNIT N°**

03 & 04

**URBAN OASIS** BY **MISSONI**



DUBAI CANAL



Disclaimer: All pictures, plans, layouts, information, data and details included in this brochure are indicative only and may change at any time up to the final 'as built' status in accordance with final designs of the project, regulatory approvals and planning permissions. All accessories and interior finishes such as wallpaper, chandeliers, furniture, electronics, white goods, curtains, hard and soft landscaping, pavements, features, gym, swimming pool(s) and other elements displayed in the brochure, or within the show apartment or between the plot boundary and the unit, are not part of the unit and are shown for illustrative purposes only.



# LEVELS 25 - 29

**3 BEDROOM**

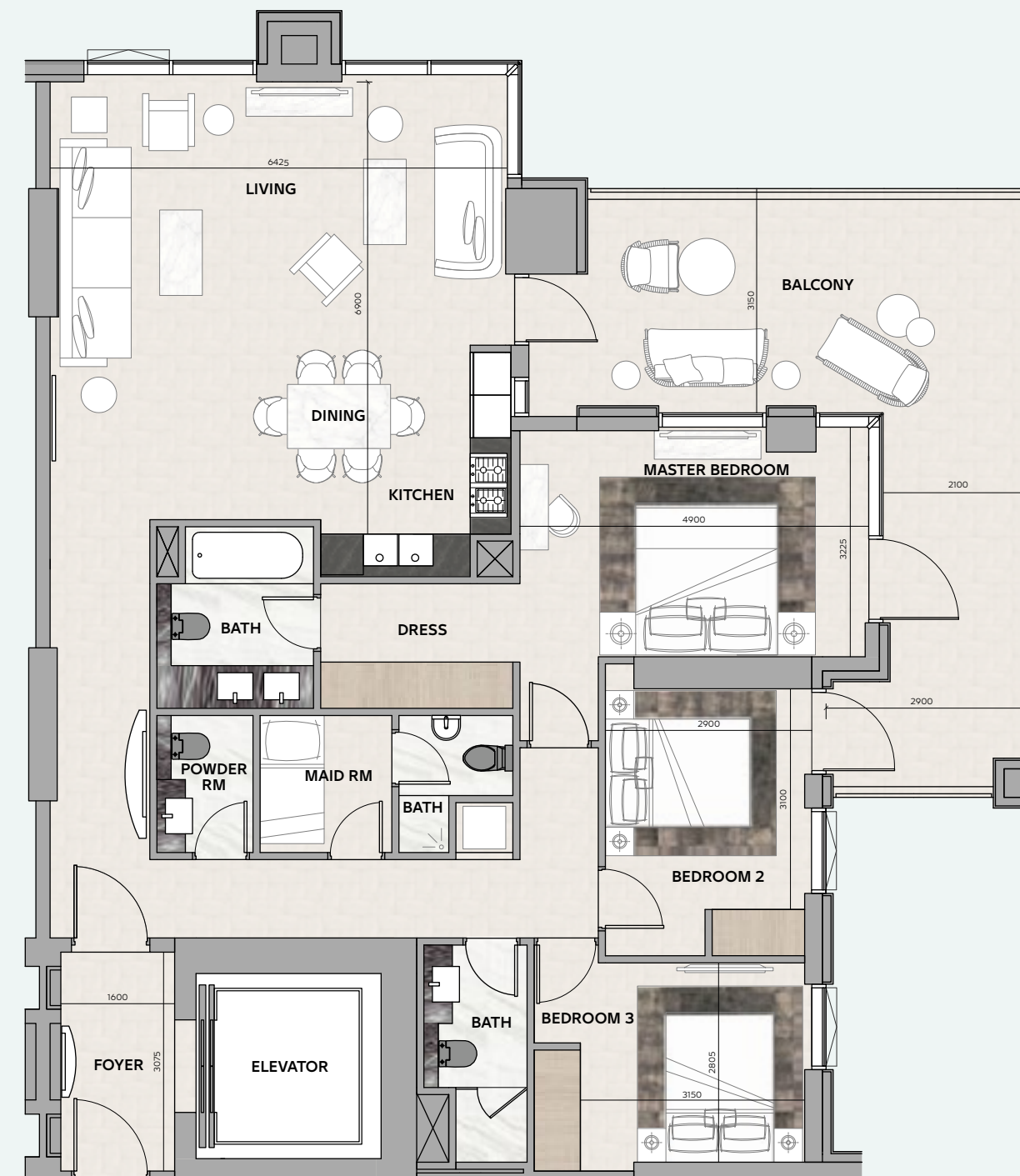
**TOTAL AREA**

178 sq.m / 1916 sq.ft

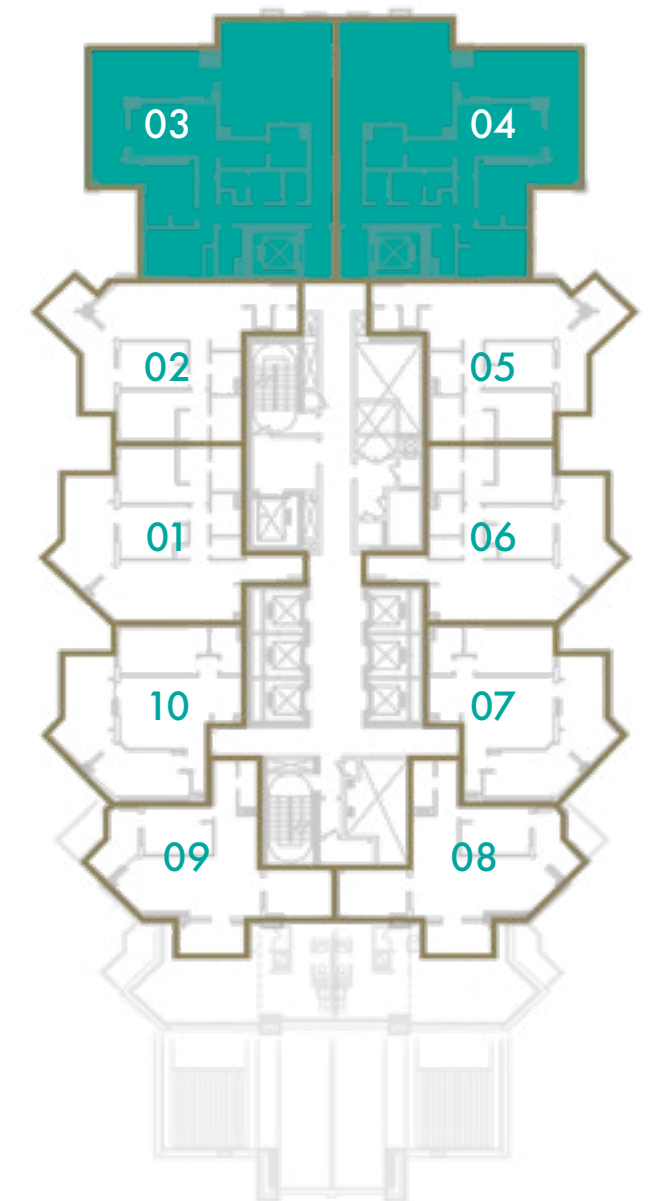
**UNIT N°**

03 & 04

**URBAN OASIS** BY **MISSONI**



DUBAI CANAL



Disclaimer: All pictures, plans, layouts, information, data and details included in this brochure are indicative only and may change at any time up to the final 'as built' status in accordance with final designs of the project, regulatory approvals and planning permissions. All accessories and interior finishes such as wallpaper, chandeliers, furniture, electronics, white goods, curtains, hard and soft landscaping, pavements, features, gym, swimming pool(s) and other elements displayed in the brochure, or within the show apartment or between the plot boundary and the unit, are not part of the unit and are shown for illustrative purposes only.



# LEVEL 30

## 2 BEDROOM

### TOTAL AREA

224.1 sq.m / 2412 sq.ft

### UNIT N°

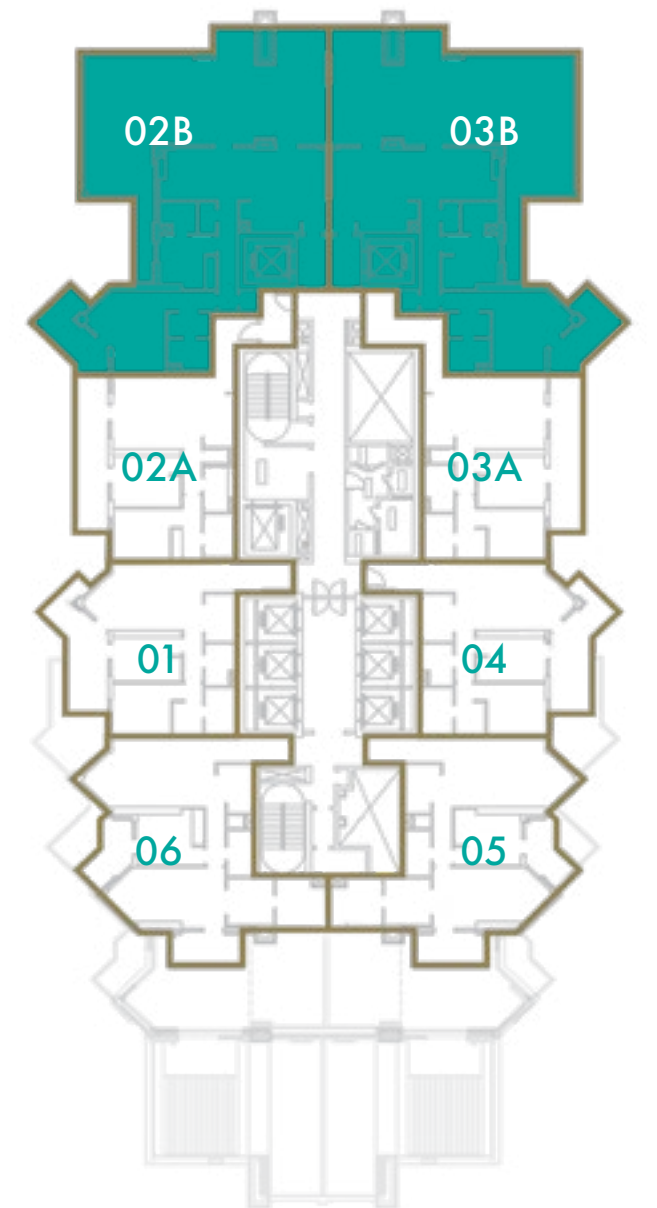
02B & 03B

URBAN OASIS BY **MISSONI**

Disclaimer: All pictures, plans, layouts, information, data and details included in this brochure are indicative only and may change at any time up to the final 'as built' status in accordance with final designs of the project, regulatory approvals and planning permissions. All accessories and interior finishes such as wallpaper, chandeliers, furniture, electronics, white goods, curtains, hard and soft landscaping, pavements, features, gym, swimming pool(s) and other elements displayed in the brochure, or within the show apartment or between the plot boundary and the unit, are not part of the unit and are shown for illustrative purposes only.



DUBAI CANAL



# LEVELS 31 - 34

## 2 BEDROOM

**TOTAL AREA**

172.2 sq.m / 1853.5 sq.ft

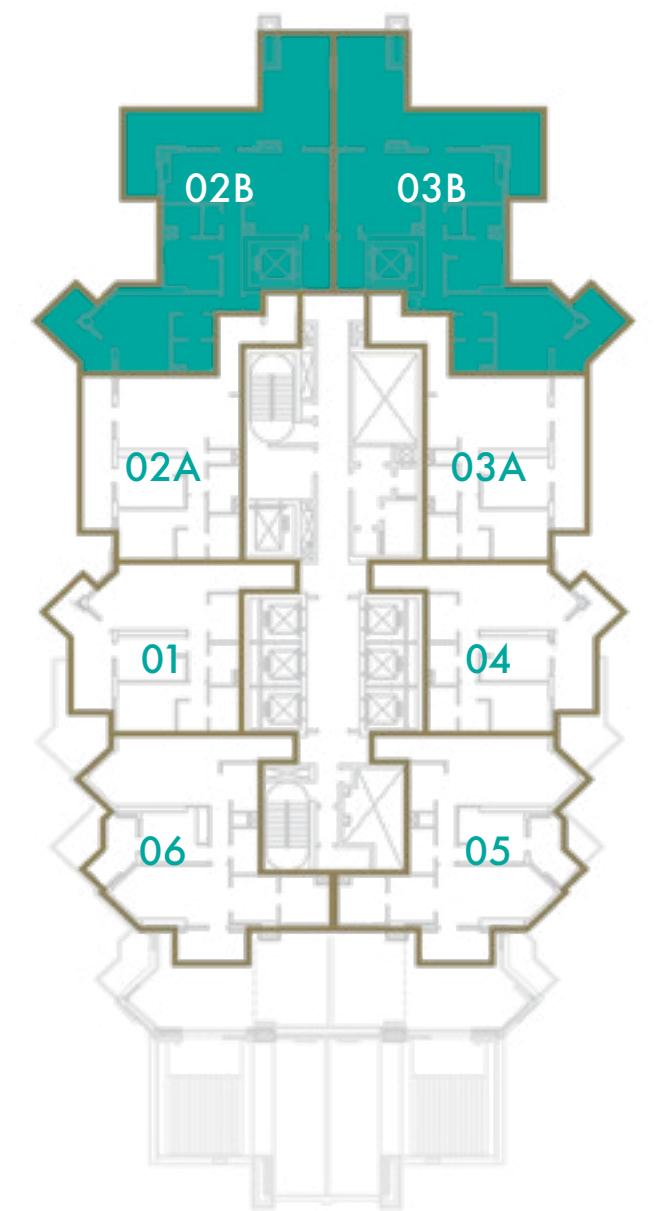
**UNIT N°**

02B & 03B

**URBAN OASIS** BY **MISSONI**



DUBAI CANAL



Disclaimer: All pictures, plans, layouts, information, data and details included in this brochure are indicative only and may change at any time up to the final 'as built' status in accordance with final designs of the project, regulatory approvals and planning permissions. All accessories and interior finishes such as wallpaper, chandeliers, furniture, electronics, white goods, curtains, hard and soft landscaping, pavements, features, gym, swimming pool(s) and other elements displayed in the brochure, or within the show apartment or between the plot boundary and the unit, are not part of the unit and are shown for illustrative purposes only.



# DARGLOBAL

## A different kind of real estate company

Building on the legacy of the largest real estate company in KSA, DarGlobal has soaked up its predecessor's talent, 28 years of experience, and innovative development methods, to upend the global real estate market and deliver properties of the highest quality.

DarGlobal's homes are tailored by world-class architects, modelled by design icons, built with top quality

materials, and managed and maintained by experts in their field across the globe.

With an exceptional design and intricate attention to detail, no two DarGlobal homes are the same.

**6**

offices in different cities worldwide

**28**

years of experience

**15,000+**

residential units delivered

**500,000**

sqm of commercial space

**8.2 bn**

USD in assets



## **LONDON, UK**

50 Hans Crescent,  
Knightsbridge, London,  
SW1X 0NA, United Kingdom

## **MARBELLA, SPAIN**

Av. Bulevar Príncipe Alfonso  
de Hohenlohe, Marbella 29602,  
Málaga, Spain  
T +34 951 74 44 84

## **BEIJING, CHINA**

303-309, North Tower,  
Beijing Kerry Centre,  
No.1 Guanghai Road,  
Chaoyang District, Beijing  
T +86 132 5888 6222

## **DUBAI, UAE**

PO Box 2523,  
Dubai, United Arab Emirates  
T +971 4 247 8999

## **DOHA, QATAR**

Malibu Building,  
Lusail Entertainment City,  
Doha, Qatar  
T +974 800 3536

## **MUSCAT, OMAN**

Office 16, Diwan of Royal Court  
Pension Fund Building,  
Shatti Al Qurm,  
Muscat, Oman

---

For more information on "Urban Oasis By Missoni"  
please call [+971 800 40404](tel:+97180040404) (UAE) or [800 3536](tel:+9748003536) (QATAR)

You can visit our website at [darglobal.co.uk](http://darglobal.co.uk)

or email us at [info@darglobal.co.uk](mailto:info@darglobal.co.uk) or via our social media platforms



**DARGLOBAL**

[darglobal.co.uk](http://darglobal.co.uk)

